

ABBATRON

Premier Supplier of Electronic Hardware

HH Smith

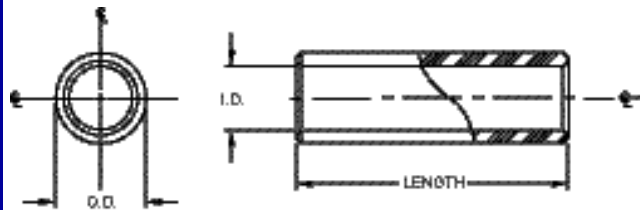
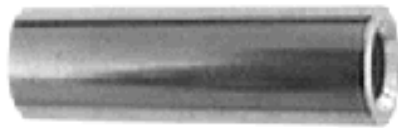
Custom Capabilities	Test Accessories	Plugs, Jacks, Posts	Connectors	Hardware	Spacers/Standoffs
---------------------	------------------	---------------------	------------	----------	-------------------

- [Home](#)
- [About Abbatron](#)
- [Products](#)
- [Locate Distributor or Representative](#)
- [Contact Us](#)
- [Request Information](#)
- [Site Map](#)

Brass Spacers

Brass spacers stand up moderately well to extreme environmental conditions, including heat and humidity. Nickel plating, easily soldered with activated flux, offers further strength against difficult ambient conditions.

- Alternative finishes available
- Other sizes available in quantity upon request
- Call Abbatron's engineering services for special application parts or materials



Inventory Search

Cross Reference

UPS Tracking

632 Arch Street, POB 726
Meadville, PA 16335 USA
814-724-6440

[Contact Webmaster](#)

© June 6, 2005

Length		O.D.	I.D.				
			#2	#4	#6	#8	#10
.125	1/8	3/16	9000	9015			
		1/4		8700	8701	8702	
		5/16			9372A	9373A	9374A
		3/8				8732	9375A
.187	3/16	3/16	9001	9016			
		1/4		8703	8704	8705	
		5/16			9372B	9373B	9374B
		3/8				8735	9375B
.250	1/4	3/16	9002	9017			
		1/4		2340	2100	2105	
		5/16			9372C	9373C	9374C
		3/8				2115	9375C
.312	5/16	3/16	9003	9018			
		1/4		8706	8707	8708	
		5/16			9372D	9373D	9374D
		3/8				8738	9375D
.375	3/8	3/16	9004	9019			
		1/4		2341	2101	2106	
		5/16			9372E	9373E	9374E
		3/8				2116	9375E
.437	7/16	3/16	9005	9020			
		1/4		8709	8710	8711	
		5/16			9372F	9373F	9374F
		3/8				8741	9375F
.500	1/2	3/16	9006	9021			
		1/4		2342	2102	2107	
		5/16			9372G	9373G	9374G
		3/8				2117	9375G
.562	9/16	3/16	9007	9022			
		1/4		8712	8713	8714	
		5/16			9372H	9373H	9374H
		3/8				8744	9375H
.625	5/8	3/16	9008	9023			
		1/4		8715	8716	8717	
		5/16			9372J	9373J	9374J
		3/8				8747	9375J
.687	11/16	3/16	9009	9024			
		1/4		8718	8719	8720	
		5/16			9372K	9373K	9374K
		3/8				8750	9375K
.750	3/4	3/16	9010	9025			
		1/4		2343	2103	2108	
		5/16			9372L	9373L	9374L
		3/8				2118	9375L
.812	13/16	3/16	9011	9026			
		1/4		8721	8722	8723	
		5/16			9372M	9373M	9374M
		3/8				8753	9375M
.875	7/8	3/16	9012	9027			
		1/4		8724	8725	8726	
		5/16			9372N	9373N	9374N
		3/8				8756	9375N
.937	15/16	3/16	9013	9028			
		1/4		8727	8728	8729	
		5/16			9372P	9373P	9374P
		3/8				8759	9375P
1.000	1	3/16	9014	9029			
		1/4		2344	2104	2109	
		5/16			9372Q	9373Q	9374Q
		3/8				2119	9375Q

1.000	1	3/16	9014	9029			
		1/4		2344	2104	2109	
		5/16			9372Q	9373Q	9374Q
		3/8				2119	9375Q